



**YAMAGEN**

FUNCTIONS KIT





# VENUE SPACES

---

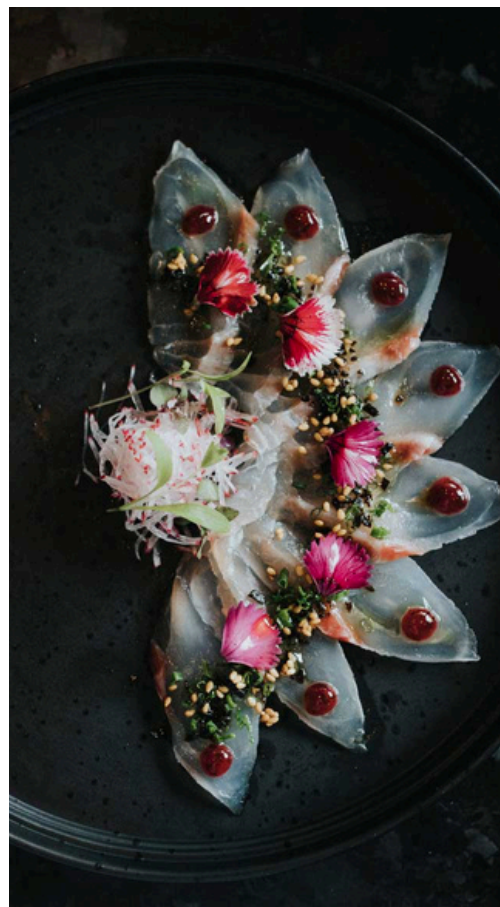
**A Slice of Japan.** Step into Yamagen. Cool and casual izakaya drink and dine vibe folded with formidable culinary discipline; this is new generation Japanese for the discerning diner.

Glossy enamel black finishes frame eye-catching details. Our Whisky list is a towering narrative of character, written by refined Japanese distilleries.

Sip from a select saké collection and sample curious cocktails in this low-lit showcase of Tokyo chic. From kitchen and bar, tradition and invention are hand-rolled with market-fresh sashimi and intricate sushi sensations. Indulge your guests with delectable share plates, shimi over and skewer some delicious kushiyaki from the grill, or bow to the formidable technique of executive chef Adam Lane for a tantalising Omakase experience.

Thank you for considering Yamagen restaurant for your upcoming event. We take great pride in offering an authentic Japanese dining experience.

For group bookings we have created a range of Omakase menu options to suit every dining experience.



**YAMAGEN**





## THE BAR

---

Inspired by the informal Japanese bars known as Izakaya, and adorned with bespoke lighting from vintage crab pots, the boisterous bar is lively and enigmatic.

Opening directly to The Green, the bar blurs the lines between indoor and outdoor and is the perfect venue for pre or post dinner drinks. Yamagen showcases one of Queensland's largest Japanese Whisky collections, including many exclusive and rare items.

Our expert bartenders can take you on a journey through Japan with recommendations, narrative and presentation of some of the best Whisky Japan has to offer. Or be guided by our team through the unique collection of Sake and Japanese beers to compliment your dining experience. The bar area is available for pre-dinner drinks or stand up style events.

It can accommodate up to approximately 50 guests for stand up and canapé style events and is available for exclusive use hire.

**YAMAGEN**





## THE KANPAI ROOM

---

## PRIVATE DINING

---

Semi-private, dreamily intimate, The Kanpai Room offers guests a memorable dining affair with the glamour of a chef-led omakase menu and the charm of a whisky or wine pairing.

Designed to evoke the hustle and bustle of a Tokyo restaurant, the open-closed ambience is your private enclave still connected to the evening and tantalised by the aroma of the robata grill. In keeping with Japanese tradition, guests begin in the bar to a boisterous 'Kanpai!' (Cheers!) Before being led between curtains to a twilight evening of izakaya dining guided by Executive Chef Adam Lane. Available for up to 16 guests, nightly. Minimum spends apply.



**YAMAGEN**



## SEMI-PRIVATE DINING

---

The semi-private dining spaces utilizes portable Japanese blinds. This space is intended to create an open-closed ambience that has the indulgent experience of privacy, minus the feeling of seclusion from the hustle and bustle of the Urban-Tokyo inspired restaurant.

The semi-private dining space can cater to groups of up to 22 guests on one large table located within our main dining space and in direct view of our robata grill.



**YAMAGEN**





## OMAKASE MENUS

---

From kitchen and bar, tradition and invention are hand-rolled with market-fresh sashimi and intricate sushi sensations. Indulge your guests with delectable share plates, shimi over and skewer some delicious kushiyaki from the grill, or bow to the formidable technique of executive chef Adam Lane for a tantalising Omakase experience

For groups of 7 or under, set menus are an option but bookings of 8 or more are required to be on a set menu.

There are two set menu options available:

♥ \$110 Omakase

♥ \$170 Omakase

The omakase set menu's are presented over a large number of courses and are small sharing style dishes.

**YAMAGEN**

# OMAKASE MENUS

## OMAKASE OPTION 1

**\$110 PER PERSON**  
**MINIMUM 2 PEOPLE**

### EDAMAME

salted

### HOKKAIDO SCALLOP SASHIMI

wakame, ginger & lime dressing,  
karkalua, pink pepper

### SASHIMI TACOS

salmon, wasabi salsa & tuna, mustard soy  
yuzu avocado, warm sushi rice,  
watermelon radish, house spicy mayo



### GYOZA

house made & pan-fried  
wagyu beef, miso mustard,

### TEMPURA WHITE BAIT

preserved yuzu mayonnaise

### KUSHIYAKI

Ranger's Valley wagyu ms6+  
with wasabi butter



### HOUSE SALAD

Avocado, green oak, nashi, wakame,  
radish, sesame dressing

### DRY AGED DUCK BREAST

beetroot puree, witlof, sansho, orange



### PASSIONFRUIT & COCONUT PANNA COTTA

burnt orange caramel, orange segments,  
lemon balm

## OMAKASE OPTION 2

**\$170 PER PERSON**  
**MINIMUM 2 PEOPLE**

### EDAMAME

salted

### SCALLOP & OCEAN TROUT TIAN

ikura, avocado, truffle tosazu, witlof

### SASHIMI ZENSAI

tuna, salmon, kingfish & snapper



### SPICY QLD SPANNER CRAB

crispy rice, ikura, red baby shiso

### WAGU ABURI

Ranger's Valley wagu ms6+, foie gras,  
crispy potato, teriyaki glaze

### SPICY POPCORN PRAWNS

spicy yuzu dressing



### HOUSE SALAD

Avocado, green oak, nashi, wakame,  
radish, sesame dressing

### KUSHIYAKI

lamb cutlets, aka denaku, chive

### MISO GLAZED GLACIER 51 TOOTHFISH

pickled cucumber, hazelnut, shiso



### PASSIONFRUIT & COCONUT PANNA COTTA

burnt orange caramel, orange segments,  
lemon balm

# CANAPÉ PACKAGES

---

## CANAPÉ MENU 1

---

**\$35**

Dishes served over a 2 hour period

**Edamame**

Salted

**Gyoza**

Wagyu beef, miso mustard, negi

**Hosomaki Roll**

Tuna & Negi

**Kushiyaki**

Yakitori Chicken skewer, spring onions,  
shichimi pepper

**Agemono**

Tempura brussel sprouts, truffle butter ponzu,  
shichimi pepper

## CANAPÉ MENU 2

---

**\$45**

Dishes served over a 2 hour period

**Edamame**

Salted

**Hosomaki Roll**

Tuna & Negi

**Urumaki Roll**

Soft shell crab, cucumber,  
tobiko, wasabi mayonnaise

**Kushiyaki**

Pork belly, masterstock, crackle

**Agemono**

Salt & Pepper squid, negi, chilli, wari  
ponzu

**Agemono**

Chicken Karage, teriyaki sauce

## CANAPÉ MENU 3

---

**\$55**

Dishes served over a 2 hour period

**Edamame**

Salted

**Hosomaki Roll**

Avocado & Sesame

**Urumaki Roll**

Dynamite spicy tuna, avocado,  
toasted sesame, spicy tempura

**Kushiyaki**

Pork belly, masterstock, crackle

**Kushiyaki**

King brown mushroom, truffled hanna

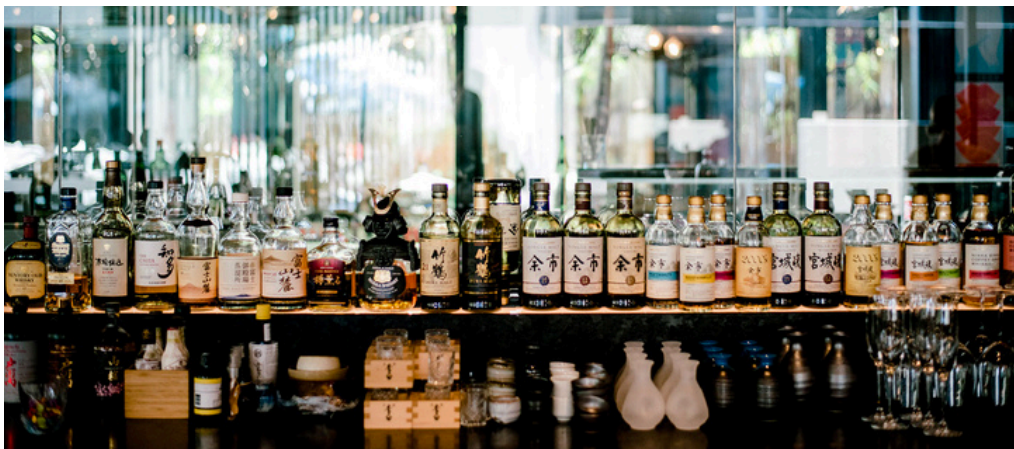
**Agemono**

Spicy popcorn prawns, spicy yuzu dressing

**Agemono**

Chicken Karage, teriyaki sauce





## BEVERAGE

---

At Yamagen, our passion is to showcase seriously bold cocktails, tantalising whisky, sake and wines from around the world. If your wanting a decadent experience, speak to our Sommelier to curate a guided menu pairing to any occasion.

### CURATE A BEVERAGE PAIRING

Or, if you're looking for a premium beverage selection, Yamagen have created three (3) beverage offerings for you to choose from. Offering a unique selection of our finest wines and beers.



**YAMAGEN**

# BEVERAGE LISTS

## CLASSIC

2 hours at **\$49pp**  
3 hours at **\$59pp**  
4 hours at **\$69pp**

Please choose one white and one red wine  
from the below selection.  
(Sparkling wine is included in every package)

### **Sparkling**

Mumm Prestige, Marlborough NZ

### **White Wine**

Vavasour 'The Pass' Sauv Blanc, Marlborough NZ  
Ross Hill Maya Chardonnay Orange NSW

### **Rosé Wine**

Hanhdorf Hill Rose, Adelaide Hills SA

### **Red Wine**

Luna Estate Pinot Noir, Martinborough NZ  
Woodstock 'Deep Sands' Shiraz, McLaren Vale SA

### **Beers**

Asahi Super Dry Draught  
Kirin Lager Draught  
Stone & Wood Pacific Ale  
James Squires Ginger Beer

Assorted Soft Drinks and Juices

## PREMIUM

2 hours at **\$65pp**  
3 hours at **\$75pp**  
4 hours at **\$85pp**

Please choose one white and one red wine  
from the below selection.  
(Sparkling wine and Rosé is included in every package)

### **Sparkling**

Mumm Prestige, Marlborough NZ

### **White Wine**

Vavasour 'The Pass' Sauv Blanc, Marlborough NZ  
Nick Spencer 'Hilltops' Pinot Gris, Hilltops NSW

### **Rosé Wine**

Brokenwood Rosato, Multi-regional NSW/VIC

### **Red Wine**

Warramate Pinot Noir Yarra Valley VIC  
Paringa Estate 'Peninsula' Shiraz, Mornington Peninsula  
VIC

### **Beers**

Asahi Super Dry Draught  
Kirin Lager Draught  
Stone & Wood Pacific Ale  
James Squires Ginger Beer

Assorted Soft Drinks and Juices

## ULTRA

2 hours at **\$79pp**  
3 hours at **\$89pp**  
4 hours at **\$99pp**

Please choose one white and one red wine  
from the below selection.  
(Sparkling wine is included in every package)

### **Sparkling**

Mumm Grand Cordon, Champagne FRA

### **White Wine**

Shaw + Smith Sauvignon Blanc, Adelaide Hills SA  
Yabbylake Chardonnay, Monington Peninsula VIC

### **Rosé Wine**

Chateau La Gironne, Cotes de Provence Rose FRA

### **Red Wine**

Poliziano Chianti, Tuscany ITA  
Mas De Libian Grenache Syrah, Cotes Du Rhone FRA

### **Beers**

Asahi Super Dry Draught  
Kirin Lager Draught  
Stone & Wood Pacific Ale  
James Squires Ginger Beer

Assorted Soft Drinks and Juices

**SPIRITS – Our first pour spirits can also be added to your package for an additional surcharge of \$10 per person**



# IMPORTANT TO KNOW

---

## GROUPS OF 8 OR MORE ARE REQUIRED TO BE ON A OMAKASE SET MENU

### Minimum Spends

- Kanpai (Private Dining Room) Minimum spend of \$2,000 weeknights (off peak). \$3,500 Fri/Sat and during peak holiday season. Capacity of up to 16 guests.
- Semi-Private Dining Spaces: Semi-Private A capacity of up to 12 guests with a min. spend of \$1,600 Mon-Thurs (off-peak). \$2,400 Fri-Sun and during peak holiday season. Semi-Private B with a capacity of 13 to 22 guests has as a min. spend of \$1,800 Mon-Thurs (off-peak). \$3,200 Fri-Sun and during peak holiday season.
- For Exclusive use of the Yamagen Bar area a minimum spend of \$2,000 is required for Mon-Thurs & \$2500 for Fri-Sun. This is for stand up canape style events.
- Al fresco dining space is available for 4 to 12 guests for dining and small canape style functions - up to 20 guests.
- Yamagen full venue (capacity of up to 70pax) and half venue (capacity of up to 40pax) hire exclusive use is available - Minimum spend applies.

### Capacity

- Maximum for a sit down dining event is 60 guests, and maximum for stand up cocktail events is 150 guests.

### Incidentals

- Any security, theming or entertainment will be an additional charge and is dependent on function, approval of venue manager and approval of QT Gold Coast.

### Weather Policy

- Al Fresco dining wet weather contingency plans will vary depending based on function; areas reserved and will be discussed at time of booking.

### Cancellation Policy

- If the event is cancelled less than 5 days from the event, the deposit will be forfeited.

### Final Numbers

- Final group numbers should be advised 3 days prior to reservation date. Should group numbers decrease within the 3 days/on the day, then final numbers previously advised will be charged, due to chefs already preparing the meals.

### Menus

- There are additional items that can be added to the standard menus if you are looking for a greater variety. If you wish to make amendments to the set menus please do not hesitate to contact the Restaurant Manager directly.

### Beverage Packages

- Only one (1) style of beverage package to be utilised at any given time. If you wish to make amendments to the beverage packages menus please do not hesitate to contact us.
- Beverage packages only available for private, semi-private, venue hire, bar hire packages.



## CONTACT US

Reservations agent  
[bookings\\_qtgoldcoast@evt.com](mailto:bookings_qtgoldcoast@evt.com)  
07 5584 1266

Restaurant Manager  
Rowan Clark  
[Rowan\\_Clark@evt.com](mailto:Rowan_Clark@evt.com)

7 Staghorn Avenue, Surfers Paradise QLD  
4217, Australia



# TERMS & CONDITIONS

---

- No booking is confirmed until QT has received this booking form and a credit card guarantee form via Sertifi. Once both have been received QT Gold Coast will send you confirmation of your booking.
- Arrival times must be adhered to. Groups that do not arrive within 15 minutes of their booking will risk forfeiting their reservation. Yamagen have a two hour dining period for both Friday and Saturday evening unless exclusive use minimum spends have been covered.
- All guests must comply with our smart casual dress code. Guests may be denied access in to the restaurants at the discretion of management for not following these dress standards.
- QT Gold Coast staff, management & security have the right to escort intoxicated patrons out of the venue at any time.
- QT Gold Coast is a fully licensed venue that practices the Responsible Service of Alcohol.
- All accounts must be finalised in the restaurant at the conclusion of your dinner. We do not offer split bills.
- Any dietary requests requiring specialised food/attention surcharges will apply. Please note that some dishes may contain traces of allergens that could have implications for patrons with food related allergies, health conditions or intolerances. Although we will endeavor to accommodate all guests dietary and allergy needs, QT cannot be held responsible for any harm suffered from the presence of these traces, and the Client releases and indemnifies QT in respect of any claims.
- Final guest numbers are required 24 hours prior to the reservation.

## **Cancellation Policy and Fees**

- Any cancellations or no shows that occur less than 24 hours prior to the booking, will be liable to pay QT Gold Coast a \$200.00 cancellation fee. This will charge the credit card provided at the time of booking.
- \* Please note you will receive an email from services@sertifi.com with a heading “QT Gold Coast Documents for eSignature” which is our security system to protect your credit card information. This credit card form is held as a guarantee.



# YAMAGEN

7 Staghorn Avenue

Surfers Paradise QLD 4217

[yamagen.com.au](http://yamagen.com.au)

[Facebook.com/yamagenrestaurant](https://www.facebook.com/yamagenrestaurant)

@YamagenRestaurant

@QTgoldcoast

#QTLife